

Part number:

006-10063

HYDROMA

HYDRAULICKÉ SYSTÉMY

**HIDROMA
SYSTEMS**

UKŁADY HYDRAULICZNE

HYDROMA

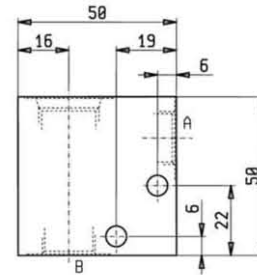
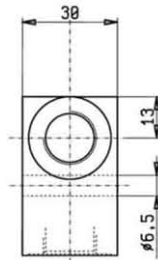
ГИДРАВЛИЧЕСКИЕ СИСТЕМЫ

**MANIFOLDS - SLEEVES - ACCESSORIES
MANIFOLDS**

2 WAY STEEL

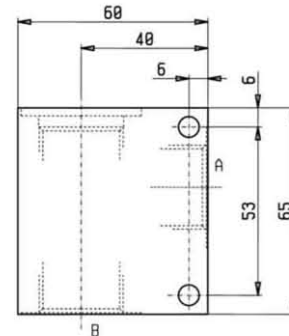
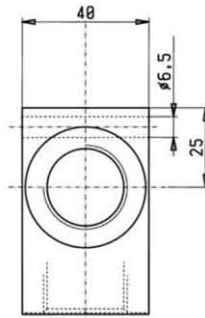
CAVITY	018-E
Dimensions on page	7.01.100

ORDERING CODE	PORTS	WEIGHT
	A-B	Kg
OC.10.09.067	G 1/4	0.450
OC.10.09.066	G 3/8	0.450



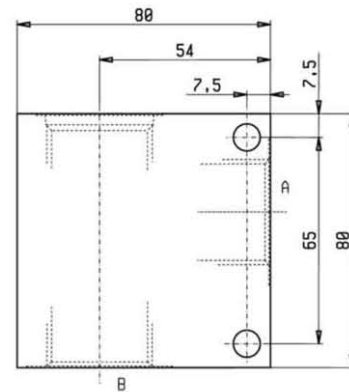
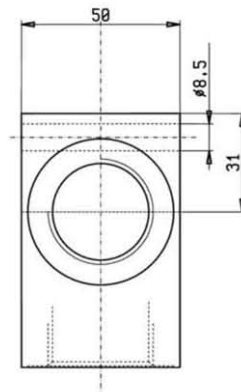
CAVITY	017-E
Dimensions on page	7.01.100

ORDERING CODE	PORTS	WEIGHT
	A-B	Kg
OC.10.09.074	G 1/2	0.900
OC.10.09.073	G 3/4	0.900



CAVITY	021-E
Dimensions on page	7.01.110

ORDERING CODE	PORTS	WEIGHT
	A-B	Kg
OC.10.09.075	G 3/4	1.300
OC.10.09.076	G 1	1.300



MAX. PRESSURE	450 bar	FEATURES
		These manifolds can be supplied upon request for working pressures up to 450 bar and for fatigue cycle applications.

Rev.03.04

6.01.020.G