

Part number:

**HYDROMA**

HYDRAULICKÉ SYSTÉMY

**HIDROMA  
SISTEMS**

UKŁADY HYDRAULICZNE

**HYDROMA**

ГИДРАВЛИЧЕСКИЕ СИСТЕМЫ

## Speed-up and Splitter Gearboxes

### Speed-up Gearboxes Series 70000-20 kW Outlet pump flange Gr. 3

#### ORDER CODE

7000 1 - 1 - [ ] - [ ]

Speed-Up Gearbox Series 70000  
Outlet pump flange Gr. 3

Inlet shaft  
1 - Male shaft A SAE 1-3/8"  
2 - Long Female shaft A SAE 1-3/8"  
3 - Short Female shaft A SAE 1-3/8"  
4 - Quick Coupling Female shaft A SAE 1-3/8"

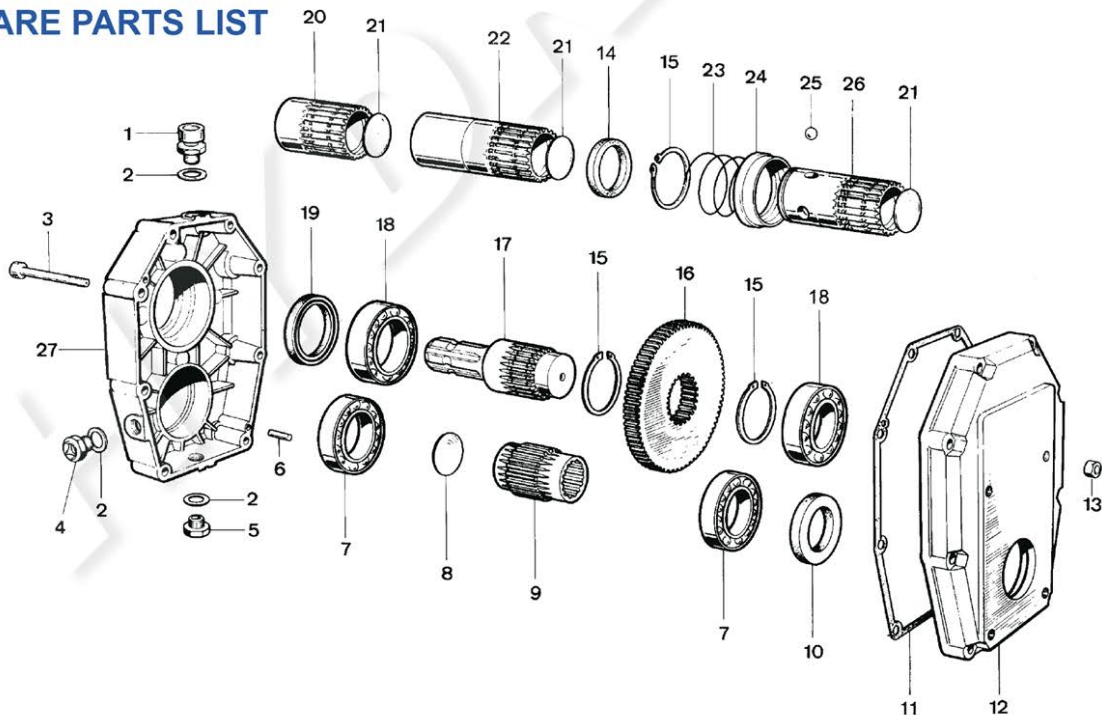
Flanges: see page 28

Special versions

Gear Ratio N2 / N1		Shaft	1	2	3	4
0 -	1		x			
1 -	1,5		x	x	x	x
2 -	2		x	x	x	x
3 -	2,5		x	x	x	x
4 -	3		x	x	x	x
5 -	3,5		x	x	x	x
6 -	3,8		x	x	x	x

blank - not available      x - Available

#### SPARE PARTS LIST



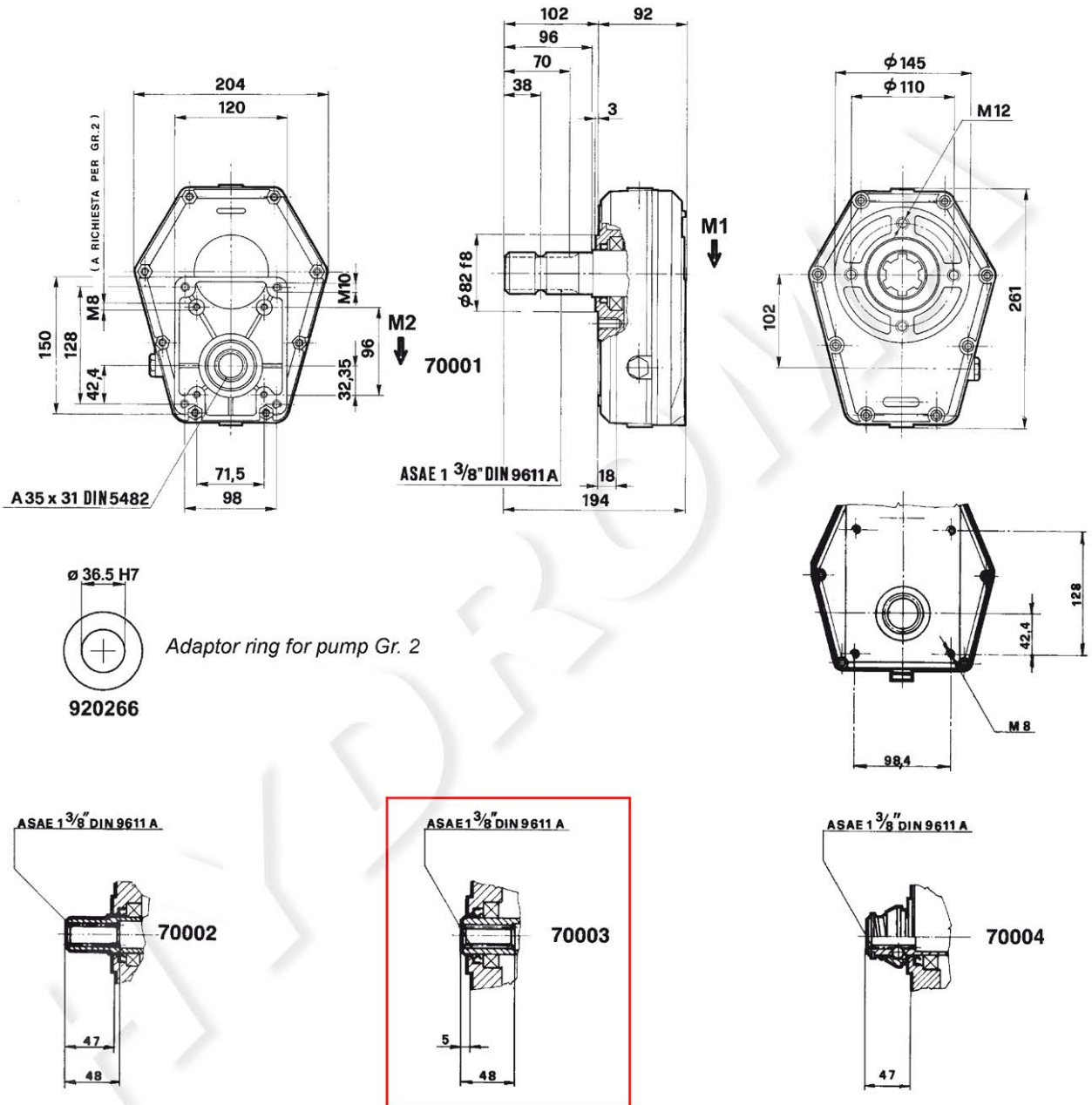
REF.	DESCRIPTION	Q.ty
1	Oil breather plug 3/8"	1
2	Gasket	2
3	Socket capscrew M8x70	8
4	Oil level plug 3/8"	1
5	Oil drain plug 3/8"	1
6	Peg	2
7	Bearing type 6009	2
8	Cap DIN 470 Ø 37	1
9	Pinion Gear	1

REF.	DESCRIPTION	Q.ty
10	Sealing ring Ø 45x65x8	1
11	Gasket	1
12	Cover	1
13	Nut M8	8
14	Ring	1
15	Snap ring dia. 50	3
16	Ring gear	1
17	Male P.T.O. shaft 1" 3/8	1
18	Bearing type 6010	2
19	Sealing ring Ø 50x65x8	1

REF.	DESCRIPTION	Q.ty
20	Female P.T.O. shaft 1" 3/8 short	1
21	Cap DIN 470 Ø 40	3
22	Female P.T.O. shaft 1" 3/8 long	1
23	Spring	1
24	Ring	1
25	Ball	3
26	Female P.T.O. quick coupling	1
27	Housing	1

## Speed-up Gearboxes Series 70000-20 kW Outlet pump flange Gr. 3

### INSTALLATION DRAWING



Housing oil capacity lt: 0,350

INPUT TORQUE M 1 daNm	OUTPUT TORQUE M 2 daNm	INPUT SPEED N 1 n/min.	OUTPUT SPEED N 2 n/min.	RATIO N 2 / N 1	POWER kW	MASS kg
31	31	540	540	1	20	8,1
38	26	540	810	1,5	20	8,1
43	21	540	1080	2	20	8,1
46	18	540	1408	2,5	20	8,1
49	16	540	1620	3	20	8,1
46	13	540	1836	3,5	20	8,1
43,7	11,5	540	2057	3,8	20	8,1