

Part number:

006-10529

HYDROMA

HYDRAULICKÉ SYSTÉMY

**HIDROMA
SYSTEMS**

UKŁADY HYDRAULICZNE

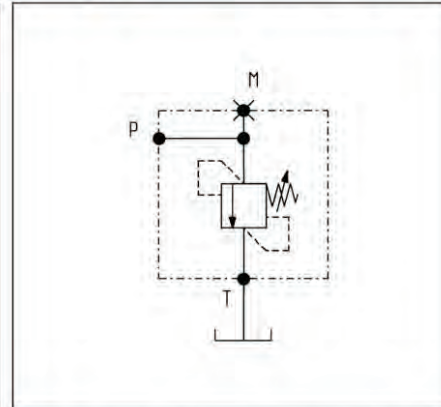
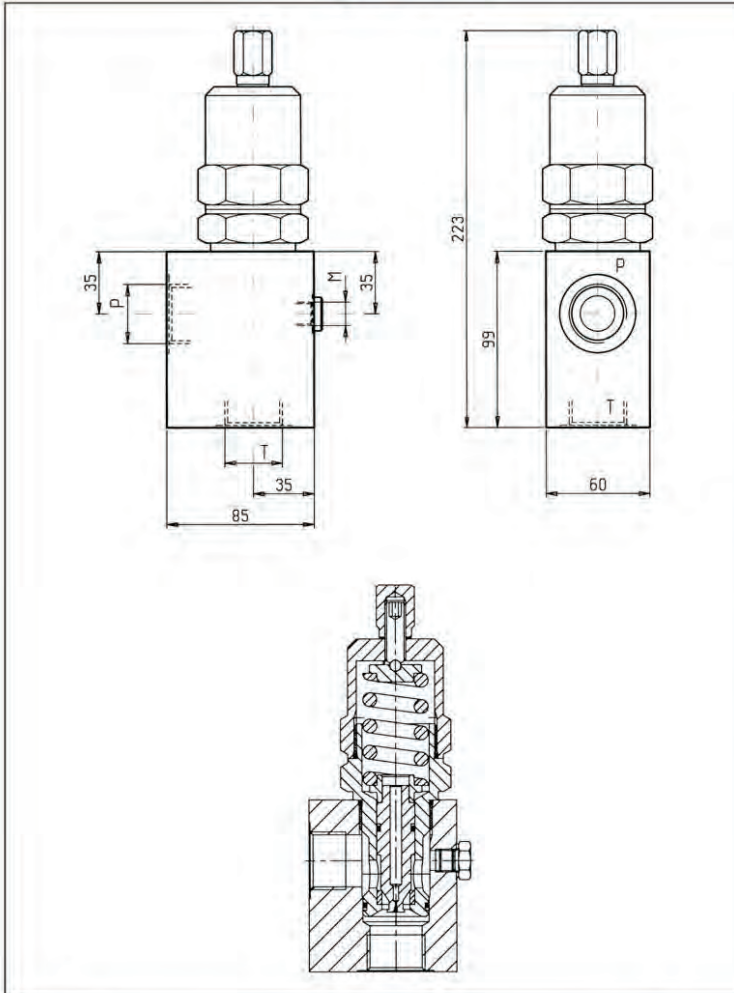
HYDROMA

ГИДРАВЛИЧЕСКИЕ СИСТЕМЫ

**MASSIMA PRESSIONE, DIRETTE, OTTURATORE DIFFERENZIALE
DIRECT, DIFFERENTIAL PISTON RELIEF**

VSDC-350

05.12.04 - X - Y - Z

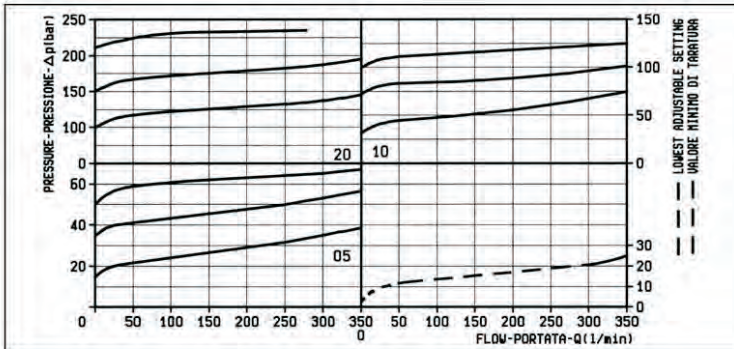


DATI TECNICI / TECHNICAL DATA

Pressione di lavoro max. 210 bar
Max. working pressure

Portata max. 350 l/min
Flow max.

Peso 2.6 kg
Weight



X	REGOLAZIONI ADJUSTMENTS	
03	vite interna esagono incassato leakproof inner hex. socket screw	

MOLLE / SPRINGS					
Z	Campo taratura min - max bar Adj. press. range bar	Incremento press. bar / giro vite Press. increase bar / turn	Taratura standard bar (Q = 5 l/min) Std. setting bar (made at 5 l/min)	Cod. ordinazione Ordering code	Colore Colour
05	15-50	9	50	03.51.01.065	nero black
10	35-100	18	100	03.51.01.064	blu blue
20	80-210	37	200	03.51.01.044	verde green

ATTACCHI / PORT SIZE		
Y	P-T	M
05	G 1	G 1/4
06	G 1 1/4	G 1/4