

Part number:

**006-10139**

**HYDROMA**

HYDRAULICKÉ SYSTÉMY

**HIDROMA  
SYSTEMS**

UKŁADY HYDRAULICZNE

**HYDROMA**

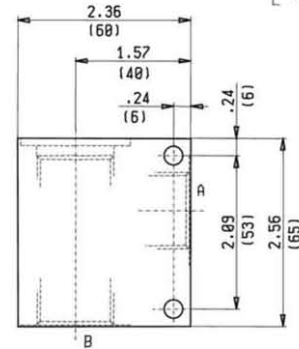
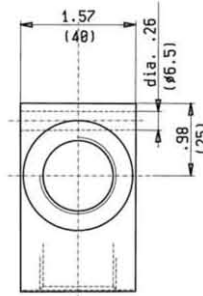
ГИДРАВЛИЧЕСКИЕ СИСТЕМЫ

**MANIFOLDS (SECTION 2)  
SPECIAL CAVITY**

**2 WAY ALUMINIUM**

<b>CAVITY</b>	<b>017-E</b>
Dimensions on page	CT.S.005.U

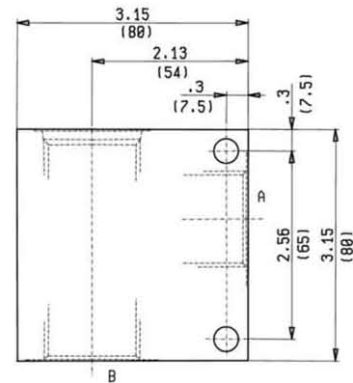
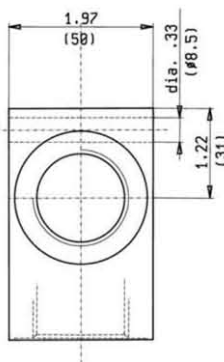
ORDERING CODE	PORTS	WEIGHT
	A-B	Lbs (Kg)
<b>OC.10.09.015</b>	G 1/2	0.441 (0.200)
OC.10.09.012	G 3/4	0.441 (0.200)



Inches  
(mm)

<b>CAVITY</b>	<b>021-E</b>
Dimensions on page	CT.S.005.U

ORDERING CODE	PORTS	WEIGHT
	A-B	Lbs (Kg)
OC.10.09.017	G 3/4	1.367 (0.620)
OC.10.09.019	G 1	1.367 (0.620)



<b>MAX. PRESSURE</b>	<b>3600 psi (250 bar)</b>	<b>FEATURES</b>
		Standard manifolds in high-strength aluminum for working pressures up to 3600 psi (250 bar).

Rev.07.06

MN2.S.001.U